



TO FIT SIZES 32 (34, 36, 38, 40) [42, 44, 46, 48, 50]



Aranaranja

Tailored turtleneck

Gauge 18 sts x 24 rows on 5 mm (US 8)

Yarn Dibadu Alpaka Walk, 199 m (218 yds) per 100 g
5 (6, 6, 6, 6) [7, 7, 7, 8, 8] skeins

Approx yardage

1000 (1050, 1100, 1150, 1200) [1250, 1300, 1400, 1450, 1500] m

1100 (1150, 1200, 1300, 1300) [1350, 1450, 1500, 1600, 1650] yds

Aran or DK **CC** for hem



Fubarite

Tailored turtleneck (fitted & wider)

Gauge 20 sts x 28 rows on 4 mm (US 6)

Yarn Rohrspatz & Wollmeise Merino DK, 428 m (468 yds) per 200 g

3 (3, 3, 3, 3) [3, 3, 4, 4, 4] skeins

Approx yardage

900 (950, 1000, 1100, 1100) [1200, 1200, 1250, 1300, 1350] m

1000 (1050, 1100, 1200, 1250) [1300, 1300, 1400, 1450, 1450] yds

Sport weight or Fingering **CC** for lining



Black Basalt

Casual cardigan

Gauge 18 sts x 26 rows on 4.5 mm (US 7)

Yarn Malabrigo Yarn Rios, 192 m (210 yards) per 100 g
6 (6, 7, 7, 7) [8, 8, 8, 9, 9] skeins

Approx yardage

1050 (1100, 1200, 1250, 1300) [1350, 1350, 1450, 1500, 1550] m

1150 (1200, 1300, 1350, 1400) [1450, 1500, 1600, 1650, 1700] yds

Small amounts of **CC** for cuff triangle

7-8 Buttons



Jadeite

Casual cardigan

Gauge 16 sts x 22 rows on 5.5 mm (US 9)

Yarn Little Grey Sheep Gotland Aran, 176 m (192 yds) per 100 g

5 (5, 5, 5, 6) [6, 6, 6, 6, 7] skeins

Approx yardage

700 (750, 800, 850, 900) [900, 950, 1000, 1050, 1100] m

800 (800, 850, 900, 950) [1000, 1050, 1100, 1150, 1150] yds



Chatoyant

Tailored pullover

Gauge 22 sts x 30 rows on 3.75 mm (US 5)

Yarn Walk Collection Luxe DK, 225 m (246 yds) per 100 g
4 (4, 4, 5, 5) [5, 5, 5, 6, 6] skeins

Approx yardage

850 (850, 900, 1000, 1000) [1050, 1100, 1150, 1200, 1250] m

900 (950, 1000, 1100, 1100) [1150, 1200, 1250, 1300, 1350] yds

Laceweight or fingering **CC** for hem



Jolt of Blue

Casual funnel neck

Gauge 25 sts x 36 rows on 3 mm (US 2.5)

Yarn WalkCollection Cozy Merino, 366m (400 yds) per 100 g

4 (4, 4, 4, 5) [5, 5, 5, 6, 6] skeins

Approx yardage

1150 (1250, 1350, 1450, 1500) [1550, 1650, 1750, 1850, 1900] m

1250 (1400, 1450, 1550, 1600) [1700, 1800, 1900, 2000, 2100] yds

Jolt of Blue is the sportweight sister to Petrichor



Coucou

Tailored tunic with tuck

Gauge 26 sts x 36 rows on 3 mm (US 2.5)

Yarn Ripples Crafts Yarn Suilven, 366 m (400 yds) per 100 g
3 (4, 4, 4, 4) [4, 5, 5, 5, 5] skeins

Approx yardage

1150 (1200, 1250, 1350, 1400) [1450, 1500, 1600, 1650, 1750] m

1250 (1300, 1400, 1450, 1550) [1600, 1650, 1750, 1850, 1900] yds

Small amounts of **CC1** & **CC2**



Mayhem dk

Tailored swingy cardigan

Gauge 20 sts x 28 rows on 4.5 mm (US 7)

Yarn Ginger Twist Studio Ginger's Hand Dyed Masham Mayhem DK, 240 m (262 yds) per 100 g

4 (4, 5, 5, 5) [6, 6, 6, 6, 7] skeins

Approx yardage

950 (1000, 1050, 1100, 1150) [1250, 1250, 1350, 1400, 1450] m

1000 (1050, 1150, 1200, 1250) [1300, 1350, 1450, 1500, 1600] yds

Small amount of **CC** for pocket lining



Dusala

Tailored cardigan

Gauge 26 sts x 36 rows on 3 mm (US 2.5)

Yarn Rohrspatz & Wollmeise Blend, 499 m (546 yds) per 150 g

3 (3, 3, 4, 4) [4, 4, 5, 5, 5] skeins

Approx yardage

1350 (1400, 1500, 1550, 1650) [1750, 1800, 2000, 2150, 2200] m

1500 (1550, 1600, 1700, 1800) [1900, 2000, 2200, 2350, 2400] yds

Small amounts of **CC1** & **CC2**



Petrichor

Casual funnel neck

Gauge 31 sts x 40 rows on 2.75 mm (US 2) needle

Yarn The Uncommon Thread Silky Merino Lace, 600 m (656 yds) per 100 g

3 (3, 3, 4, 4) [4, 4, 4, 4, 5] skeins

Alternative yarn: Rohrspatz & Wollmeise Lace-Garn

Approx yardage

1550 (1650, 1750, 1850, 1950) [2000, 2150, 2250, 2350, 2450] m

1700 (1800, 1900, 2000, 2100) 2200, 2350, 2450, 2550, 2650 yds





TO FIT SIZES 32 (34, 36, 38, 40) [42, 44, 46, 48, 50]



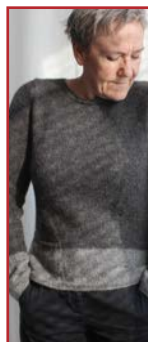
Rabalder

Casual cowl pullover
Gauge 19 sts x 26 rows on 4.5 mm (US 7) = 10 cm / 4"
Yarn Outlaw Yarn Bohemia Worsted (45% Polwarth, 45% Alpaca, 10% Possum, 200 m (219 yds) per 100 g
 MC Royal, 6 (6, 7, 7, 7) [7, 8, 8, 9, 9] skeins
CC Fingering or Heavy Lace, Manos del Uruguay Fino (Light Fingering, 1 skein)
Approx yardage
 MC 1100 (1150, 1250, 1300, 1350) [1400, 1500, 1550, 1650, 1700] m
 1200 (1250, 1350, 1400, 1450) [1500, 1600, 1700, 1800, 1850] yds
CC 200 m (250 yds)
Alternative yarn: Vahva (Paksu) Pirkkalanka



Verdite

Tailored a-line(ish) tunic
Gauge 24 sts x 31 rows on 3 mm (US 2.5)
Yarn Dibadu Funnies Curly Silk, 350 m (383 yds) per 100 g
 4 (4, 4, 4, 5) [5, 5, 5, 5, 6] skeins
Approx yardage
 1150 (1200, 1250, 1350, 1450) [1500, 1550, 1600, 1700, 1750] m
 1250 (1300, 1350, 1450, 1600) [1600, 1700, 1750, 1900, 1950] yds



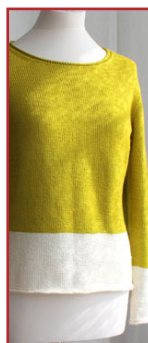
Sammelsurium

Tailored pullover
Gauge 20 sts x 28 rows on 4 mm (US 6)
Yarn The Little Grey Sheep Gotland DK, 237 m (259 yds) per 100 g
 MC 3 (3, 3, 3, 4) 4, 4, 4, 4, 4
CC 1 (1, 1, 1, 2) [2, 2, 2, 2] skeins
Approx yardage
 MC
 600 (650, 700, 700, 750) [800, 850, 850, 900, 950] m
 650 (700, 750, 800, 800) [850, 900, 950, 1000, 1000] yds
CC
 200 (200, 250, 250, 250) [250, 300, 300, 300, 300] m



Blue Basalt –eBook BONUS PATTERN

Tailored cardigan
Gauge 20 sts x 28 rows on 4 mm (US 6)
Yarn Rohrspatz & Wollmeise Merino DK, 428 m (468 yds) per 200 g
 3 (3, 4, 4, 4) [4, 4, 4, 4, 5] skeins
Approx yardage
 1200 (1250, 1300, 1400, 1400) [1500, 1550, 1600, 1700, 1750] m
 1300 (1350, 1450, 1500, 1550) [1650, 1700, 1750, 1850, 1900] yds
 Small amounts of **CC** for cuff triangle
Little sister to Black Basalt / photo © Karin Emma Karlsen



Simple Summer Ziggurat

Tailored pullover
Gauge 26 sts x 36 rows on 3 mm (US 2.5)
Yarn Rohrspatz & Wollmeise Pure, 525 m (574 yds) per 150 g
 MC 2 (2, 2, 2, 2) [3, 3, 3, 3, 3] skeins
CC 1 skein
Approx yardage
 800 (850, 900, 950, 1000) [1050, 1100, 1150, 1200, 1250] m
 850 (900, 950, 1050, 1100) [1150, 1200, 1250, 1350, 1350] yds
CC 350 (350, 400, 400, 450) [450, 500, 500, 500, 550] m



Mayhem Lace –eBook BONUS PATTERN

Tailored swingy cardigan
Gauge 30 sts x 44 rows on 2.5 mm (US 1.5)
Yarn Rohrspatz & Wollmeise Lace-Garn, 1575 (1722 yds) per 300 g
 1 (1, 1, 2, 2) [2, 2, 2, 2, 2] skeins
Approx yardage
 1500 (1600, 1650, 1750, 1800) [1900, 2000, 2100, 2150, 2250] yds
 1650 (1700, 1800, 1900, 1950) [2050, 2150, 2250, 2350, 2450] yds
 Small amount of **CC** for pocket
Little sister to Mayhem dk cardigan



Sweet Laurel

Tailored cardigan
Gauge 20 sts x 28 rows on 4 mm (US 6)
Yarn SweetGeorgia Superwash DK, 234 m (256 yds) per 115 g
 4 (4, 5, 5, 5) [5, 6, 6, 6, 6] skeins
Approx yardage
 850 (900, 1000, 1050, 1100) [1100, 1150, 1200, 1300, 1300] m
 950 (1000, 1050, 1100, 1200) [1250, 1300, 1350, 1400, 1450] yds



Vaudeville

Casual tunic
Gauge 27 sts x 38 rows on 3 mm (US 2.5)
Yarn The Uncommon Thread Everyday Singles, 366 m (400 yds) per 100 g
 5 (5, 5, 5, 6) [6, 6, 6, 6, 7] skeins
Approx yardage
 1500 (1550, 1650, 1800, 1850) [1950, 2000, 2150, 2200, 2300] m
 1650 (1700, 1800, 1950, 2050) [2150, 2200, 2350, 2400, 2550] yds
 Small amounts of **CC1** & **CC2**



Åsa Tricosa Ziggurats

16 elegantly seamless knits

sweaters :: cardigans :: tutorials

16 designs :: 244 pages :: £35 :: Published May 2018

~ includes the eBook with 2 additional bonus patterns~

Available from: purlscence.co.uk

